

AICG

Airport International Construction Group

AICG

Airport International Construction Group

International General Contracting

AICG
Airport International Construction Group

ITINERA

MCI Infrastructures Engineering

SINECO

Studio Architetti Caccia Dominioni – Zucca e Associati

INSECO M&C Engineering

MISSION

International General Contracting

headquarters

MILANO

ROMA

technical offices

MILANO

TORTONA (AL)

AICG

Airport International Construction Group

AICG is a being set up Contractual Joint Venture between companies with international activities that aggregate their skills, technical qualifications and references to design, execute and manage large civil works infrastructure in the field of airports in the most important countries in the world

AICG

Airport International Construction Group

SKILLS

- airports
- public infrastructural works, roads, highways, tunnels, viaducts, railways, dams.
- steel structures
- residential, commercial, industrial constructions
- design and construction management
- eco-sustainable and energy efficient LEED certificables constructions

AICG

Airport International Construction Group

MAIN PROJECTS	<i>client</i>	<i>value (euro)</i>	<i>years</i>
Architectural and structural civil works for expansion of Terminal 1, 3/3 and Satellite C - Milan Malpensa Airport	SEA Società Esercizi Aeroportuali Segrate (MI) Italy	46.423.864	2011-2015
Basement structures Expansion Terminal 1 3/3 - Milan Malpensa Airport	SEA Società Esercizi Aeroportuali Segrate (MI) Italy	34.664.065	2005-2009
Design and build new railway station at Terminal 2 - Milan Malpensa Airport	SEA Società Esercizi Aeroportuali Segrate (MI) Italy	27.483.669	2015-2016
Construction of railway connection terminals T1-T2 - Milan Malpensa Airport	SEA Società Esercizi Aeroportuali Segrate (MI) Italy	40.091.458	2014-2016
Design and build extension of passenger Terminal - Orio al Serio Bergamo Airport	S.A.C.B.O. S.p.A. - Società per l'Aeroporto Civile di Bergamo - Orio al Serio (BG)	16.758.521	2013-2015
Design of main building and Satellite North - Terminal 1 Milan Malpensa Airport	SEA Società Esercizi Aeroportuali Segrate (MI) Italy		2001-2014
Detailed and Final design about airside pavements upgrading of airside assets – Part 2, Venice Airport	SAVE S.p.A.	80.000.000	2016-today

AICG

Airport International Construction Group

MAIN PROJECTS	client	value (euro)	years
Engineering services relating to the feasibility study for the development and modernization of Tabriz Int. Airport	VITALI S.p.A.	50.000.000	2016-today
Detailed and Final design about functional and structural upgrading of airside assets Ronchi dei Legionari Airport	Aeroporto Friuli Venezia Giulia S.p.A.	9.000.000	2016-today
Preliminary and Final design about pavements upgrading of 14/32 runway and taxiway AB Brescia Montichiari Airp.	Aeroporto Valerio Catullo di Verona Villafranca S.p.A.	8.000.000	2016
Detailed design about pavements upgrading (airside assets: Head 22, taxiway K, W, Y, taxiway T) "Valerio Catullo" Verona Airport	Aeroporto Valerio Catullo di Verona Villafranca S.p.A.	3.000.000	2015-2016
Maintenance strategies to increase macrotexture of wearing course of runway 05/23 of Florence Airport	Aeroporto di Firenze S.p.a		2015
Construction and extension of Apron cement concrete pavement "Marco Polo" Venice	E.MA.PRI.CE. S.p.A.	7.000.0000	2014-2016

AICG
Airport International Construction Group

Group Representative
MCI Infrastructure Engineering
Group coordinator
INSECO M&C Engineering

Board

Ing. M. Malvagna - ITINERA
Arch. Gregorio Caccia Dominioni - CD&Z
Prof. Ing. Maurizio Crispino - MCIVIE
Ing. Andrea Giusberti -IM&C Eng
Ing. C. Vezzosi - SINECO

AICG

ITINERA

part of GAVIO GROUP

large-scale infrastructure projects and civil construction

headquarters
TORTONA (AL)

technical offices
TORTONA (AL)

ITINERA S.p.A. – 15057 Tortona (AL), S.S. 10 per Alessandria 6/A – www.itinera-spa.it

ITINERA

part of GAVIO GROUP

The company

Itinera has been active in large-scale infrastructure projects and civil construction for more than 75 years, in Italy and around the world.

Established in 1938, at the beginning of the 1960s Itinera became part of the Gavio Group, the fourth toll road operator in the world with 3.320 km of roads under concession.

Gavio Group is the main toll road operator in the North-west of Italy with approximately 1.460 km of network under concession, through the acquisition of joint control of Ecorodovias, manages approximately 1.860 km of roads in Brazil. The Gavio Group is also active in transportation and logistics, engineering, energy and shipbuilding, with consolidated revenues of 3.4 billion Euro and 5,600 employees.

Today, Itinera is one of world's top infrastructure players in terms of size, backlog and revenues, operating both as a contractor and on developing the greenfield concessions business.

ITINERA

part of GAVIO GROUP

Activity Sectors

Road and railway infrastructure works

Tunnels and underground works

Dams and maritime works

Civil construction (Airports, residential, commercial and industrial works)

Itinera leads the “ACI” permanent consortium (with the participation of other companies in the Gavio Group such as Interstrade, Sea, Euroimpianti Electronic, Sinelec, and ABC Costruzioni), which is the General Contractor through which the Company carries out complex works, interacting with the main enterprises in the construction sector.

The Company is also active as a Promoter of new initiatives under concession, a sector in which it stands out for having organized the financing, design, realization and subsequent operation of important motorway segments, port facilities, and public parking areas.

ITINERA

part of GAVIO GROUP

Activity Sectors

Today Itinera can rely on a wealth of organizational and management capabilities, a high level of professional skills and financial soundness, and also an extensive fleet of technologically-advanced equipment, that allows it to simultaneously manage and control various projects, meeting the needs for infrastructure growth in Italy over the world.

Over the years the Company has developed and expanded its branch activity dedicated to the monitoring of safety at its work sites and facilities, including through the quality system and ISO 9001/08 certification.

With extensive experience in Italy and worldwide , Itinera operates with a constant commitment always towards the protection of the Environment , Technological Innovation , to the satisfaction of their customers.

AICG

MCI Infrastructures Engineering

Civil Engineering and
Transport Infrastructures

headquarters
MILANO

technical offices
MILANO

MCI Infrastructures Engineering Srl – 20145 Milano, Via M. Pucci 6 – www.mcivie.com

MCI Infrastructures Engineering

The company

MCI Infrastructures Engineering Srl is a private Professional Company that works in the field of Civil Engineering, mainly about Transport Infrastructures (airports assets, flexible and rigid pavements, rehabilitation of existing infrastructures, etc.). The activities of the Company concern the entire engineering of works, from feasibility through detailed design, implementation and construction supervision.

Prof. Eng. Maurizio Crispino and his staff's internationally recognized knowledge and experience concern design and construction of airports and roads: from the mix design of materials to the project of rigid and flexible pavements, to rehabilitation of existing infrastructures and to design (geometric and functional) of new assets and their management (Pavement Managements Systems).

MCI Infrastructures Engineering

Services

The company mainly focuses on design, construction methods and maintenance and rehabilitation of infrastructure, in particular airports and roads, operating in the following fields of activity:

- Maintenance procedures to increase road and airports safety;
- Engineering related to airports civil work, plants and AVL
- Research and Investigation on Pavement and materials;
- Preliminary and Feasibility Studies on Pavement and materials;
- Preliminary and Detailed Pavement Design;
- Assistance to Calls for Tenders;
- Evaluation of tenders;
- Works Management and construction supervision;
- Support to works Monitoring, Testing and surveying;
- Development of Pavement Management Systems (PMS) for airports and roads.

AICG

Studio Architetti Caccia Dominioni – Zucca e Associati

Design and Construction Management

headquarters
MILANO

technical offices
MILANO

Studio Architetti Caccia Dominioni-Zucca e Associati – 20123 Milano, Piazza S.Ambrogio 16 –
www.cidizeta.it

Studio Architetti Caccia Dominioni – Zucca e Associati

The Company

Studio Associato Caccia Dominioni e Zucca was born in Milan in 1970 from the passion of two young Professionals who rapidly imposed themselves in Italy and soon realizing interventions also in the rest of Europe (France, Switzerland, Belgium).

For more than 40 years of experience the Company has been establishing itself in all the sectors of Architectural Design as industrial design, urban design, advertising graphic and coordinated image.

The Company starts its activity focusing on private and industrial construction; later on it turns to the tertiary branch to finally focus, during the last years, on construction renovation and restoration. Very recent is the intervention on Malpensa Airport.

The success gained and consolidated through the years is founded on the ability of the Company to interpret the different styles, understanding at its best the client's requirements and desires, creating rational structures and efficient and comfortable spaces.

In 2013 the Company was renovated and the structure was extended, still remaining in the scar of tradition and maintaining a strong culture and ability of purchasing along the path.

AICG

INSECO M&C Engineering part of INSECO GROUP

Design and Construction Management

headquarters
ROMA

technical offices
MILANO, BOLOGNA

INSECO M&C Engineering Srl – 00193 Roma, Via Vittoria Colonna 32 – www.insecogroup.com

INSECO M&C Engineering

part of INSECO GROUP

High level of eco-expertise in infrastuctural and civil design

INSECO M&C Engineering is a complex organization with the vocation of maintaining a high level of expertise in eco-sustainable solutions and transferring this body of knowledge in the design and construction of infrastructural and civil works in the international arena.

Leadership in energy-efficient works

By its network of companies producing environmentally friendly materials and partners dealing with green economy, INSECO M&C Engineering aims to be a leader in the design and construction of well-being and energy-efficiency in every fields of constructions.

INSECO M&C Engineering

part of INSECO GROUP

Vocation

To develop an eco-friendly project aiming at improving energy, environmental performances and be self-sufficient in terms of energy.

To manage its expansion with a business organization that uses an international network of permanently associated engineering and architectural teams.

To increase the market value of projects and buildings.

To make use of LEED certification for their projects (platinum, gold, silver)

Internationalization

INSECO M&C Engineering is part of the INSECO Group that it has a strong international vocation.

AICG

SINECO

part of GAVIO Group

Control, monitoring and planning of maintenance interventions for big transport infrastructures

headquarters
MILANO

technical offices
MILANO

SINECO S.p.A. – Viale Isonzo, 14/1 – 20135 Milano – www.gruppo-sina.it

SINECO

part of GAVIO Group

The company

SINECO operates in the engineering sector, with special reference to the control and planning of maintenance interventions for big transport infrastructures.

The Company was established in 1987 by SINA – Società Iniziative Nazionali Autostradali – and by some important motorway representative companies, and today SINECO is part of the group ASTM S.p.A - Autostrada Torino Milano – which is leader in transport infrastructures with a national motorway network of more than 1.400 km.

SINECO

part of GAVIO Group

Products and services

Sineco is highly qualified in the differentiated field of systems and procedures of diagnostic researches and it holds specific competences in the control and surveillance of bridges, viaducts and galleries (at this moment, more that a thousand of pieces of art are under our control). The Company also holds specific competences in road/airport paving maintance engeeniering (every year more than 5000 km are surveyed with our high-performance technologies) and in the quality checks of the materials used in works of maintance and construction.

The distinctive and qualifying elements of Sineco's services and products are the result of the continuous investement in the technological development, of the high-level technical and instrumental widening and maintance of our equipment.

SINECO

part of GAVIO Group

Main SINECO's services in the Airport sector:

- “Bearing capacity tests” of airport pavements (aprons, runways, taxiways, etc.) through non-destructive testing and ACN/PCN parameters calculation (Annex 14 of ICAO rules).
- “Longitudinal/transversal roughness tests” of runways’ surface, taxiway, etc., (Annex 14 of ICAO rules).
- “Surface distress conditions tests” of airport pavements (rest areas, runways, slip roads, etc.) and calculation of Pavement Condition Index PCI (ASTM D5340, FAA 150/5380-6b and 150/5380-7 Circulars).
- “Retroreflection RL tests” of horizontal/vertical signals”.
- “Pavement stratigraphic tests” through Ground Penetrating Radar (GPR)

SINECO

part of GAVIO Group

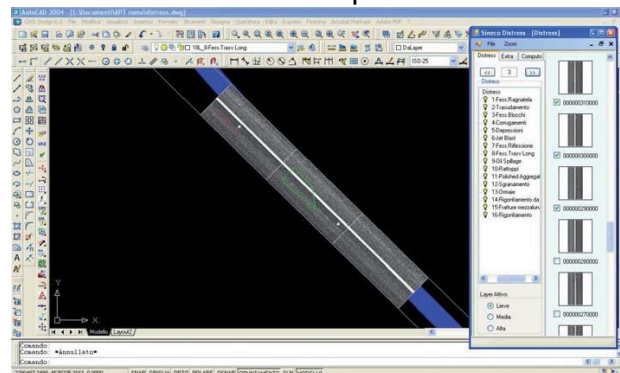
- “Dimensional and topographic surveys of airside infrastructures” through dynamic (Laser Mobile Mapper) and static laser scanner tools for the measurement of transversal and longitudinal gradient, steady gradients and for the acquisition of topographic and plano-altimetric data for projects and tests of compliance with ICAO rules.
- Laboratory tests on building materials during new constructions or requalification works of rigid and flexible pavement, using own “Materials Test Lab” and, if necessary, using appropriately equipped Mobile Labs.

SINECO is certified UNI EN ISO 9001:2008 and its laboratory operates in compliance with “UNI EN ISO/IEC 17025:2005 “General requirements for the competence of testing and calibration laboratories” for all the airport pavement test

Venice - Marco Polo Airport

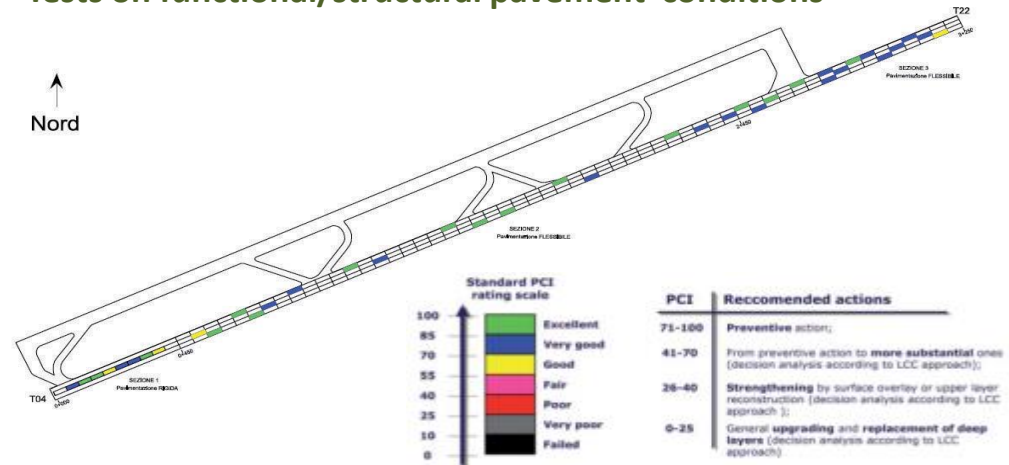


Aerial view Venezia Airport



Screenshot of the software used to calculate PCI index

Tests on functional/structural pavement conditions



General Planimetric Plan – PCI Surveys



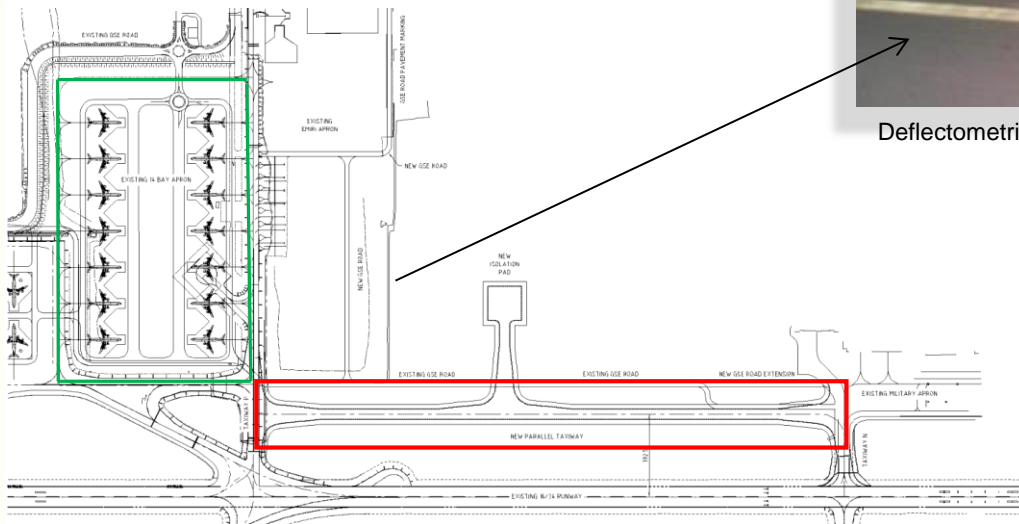
HWD Data Acquisition

Doha Airport (QA)

HWD Deflectometric Surveys and structural analysis of the airside infrastructures.

► Testing areas:

- DELTA 1
- DELTA 2
- DELTA 2 EST
- PAPA



Deflectometric surveys with HWD device

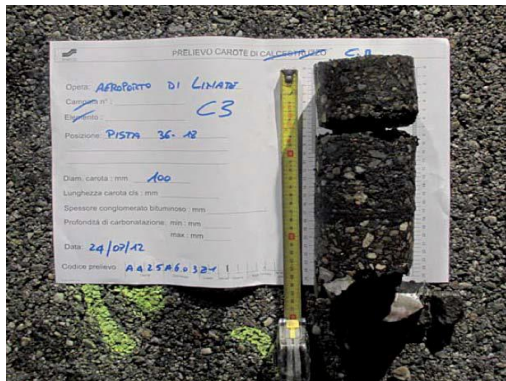


Pavement temperature measuring

Linate Airport – Milan (Italy)



ARAN Vehicle (Automatic Road Analyzer)

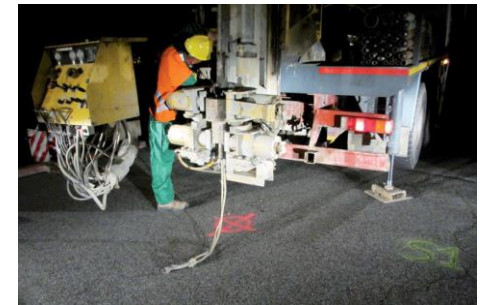


Core sample of the asphalt concrete pavement

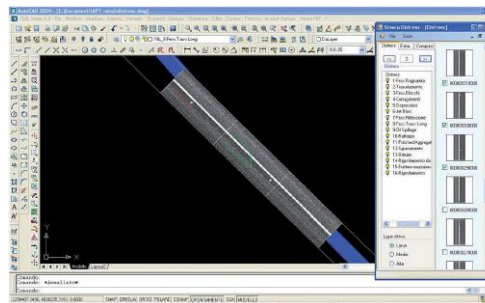
Tests on pavement status indexes and Laboratory Tests on pavement materials



View of Linate Airport



Preparation of equipment



Software for PCI (Pavement Condition Index) calculation.



Starting area of ARAN survey

Mobile Laser Scanning of airport facilities and lab tests on pavement materials

SINECO spa
part of GAVIO GROUP

Malpensa Airport



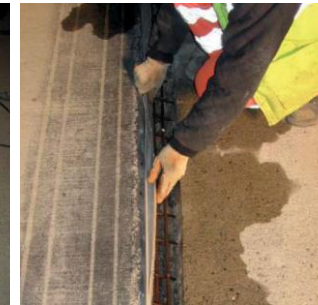
Apron facilities: 3D Point Cloud



RWY 17L/35 – 3D Point Cloud



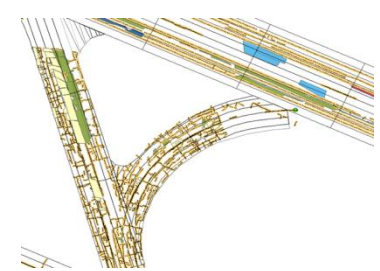
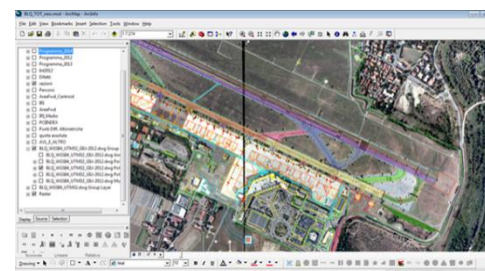
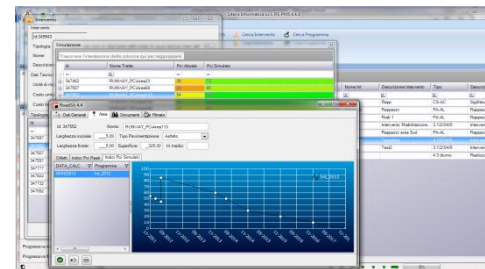
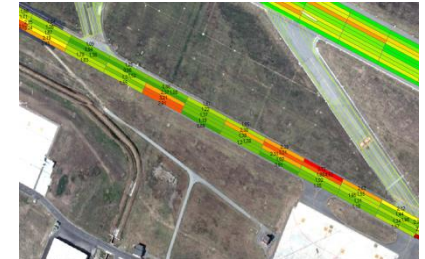
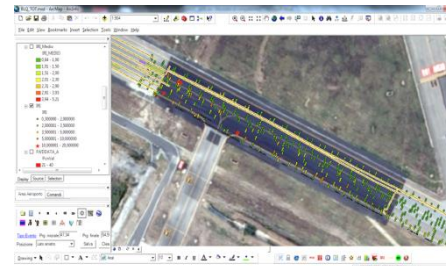
Aerial View of Malpensa Airport



Maintenance works in Malpensa: requalification of tested slabs and joints of the 17L/35R runway

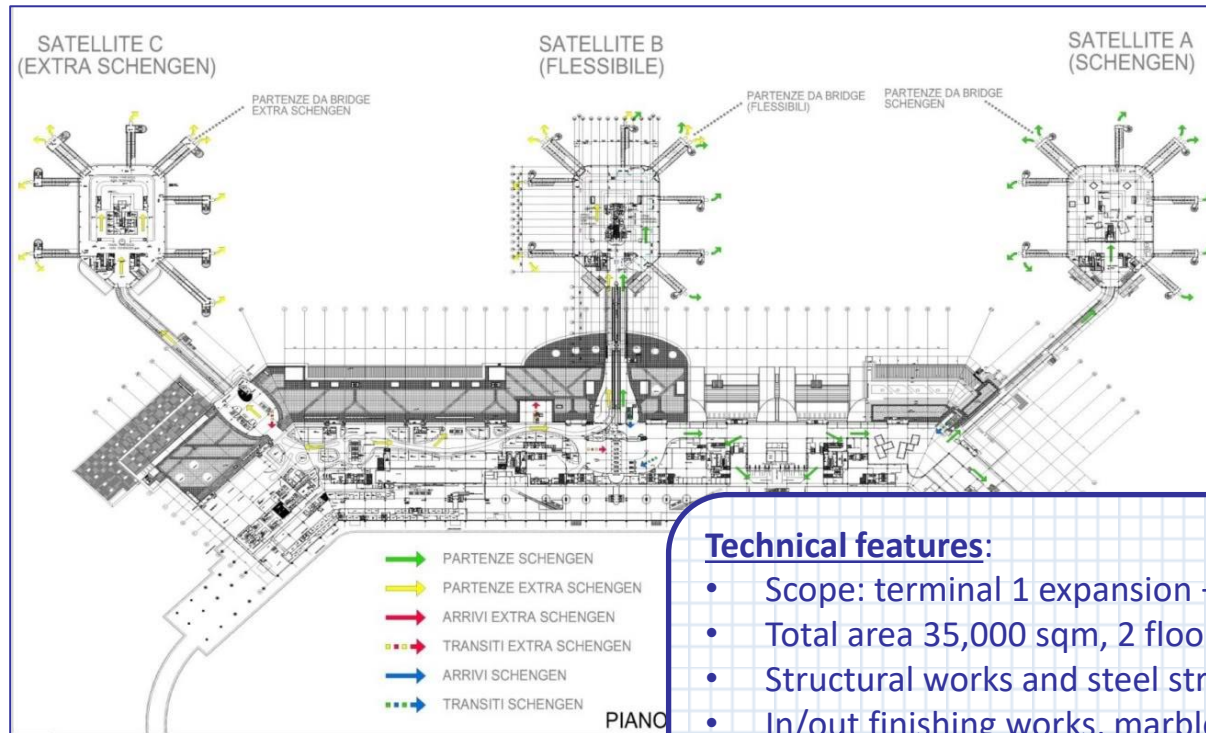
**Caselle Airport -
Turin**

Survey and monitoring of airport pavements. The project included the implementation of a specific software for pavement management and rehabilitation planning.



ARCHITECTURAL and STRUCTURAL CIVIL WORKS for EXPANSION OF TERMINALS 1, 3/3 AND SATELLITE C - Milan Malpensa Airport

ITINERA spa
part of GAVIO GROUP



Technical features:

- Scope: terminal 1 expansion + satellite C
- Total area 35,000 sqm, 2 floors above ground
- Structural works and steel structures,
- In/out finishing works, marble flooring and cover panels, ceiling, MEP.
- Airport in operation during construction

ARCHITECTURAL and STRUCTURAL CIVIL WORKS FOR EXPANSION OF TERMINALS 1, 3/3 AND SATELLITE C - Milan Malpensa Airport

ITINERA spa
part of GAVIO GROUP



Technical features:

- Satellite C
- No. 2 floors above ground
- No. 8 boarding bridges
- Docking code: F type A380
- VIP area 1700 sqm

BASEMENT STRUCTURES EXPANSION TERMINAL 1, 3/3 Milan Malpensa Airport

ITINERA spa
part of GAVIO GROUP

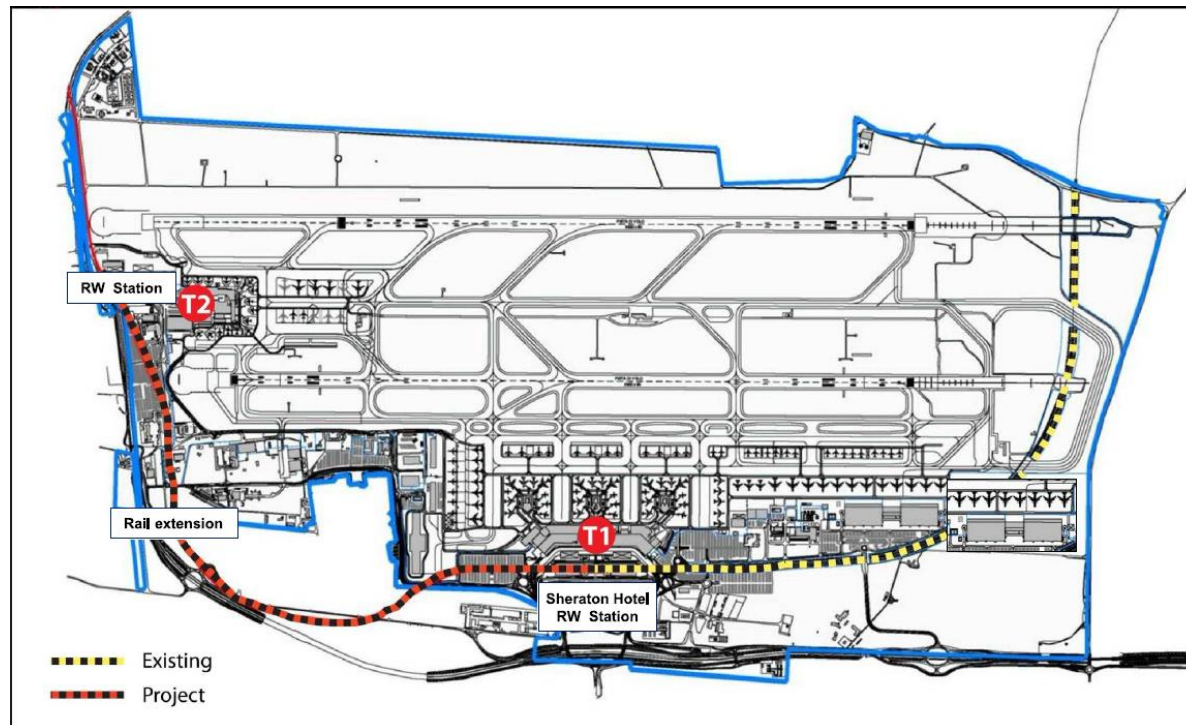


Expansion of the structure



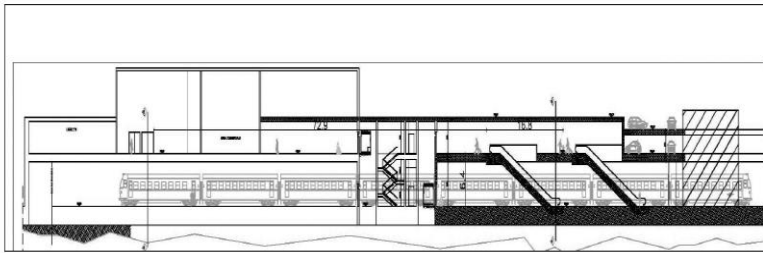
DESIGN & BUILD NEW RAILWAY STATION AT TERMINAL 2 Milan Malpensa Airport (*under construction*)

ITINERA spa
part of GAVIO GROUP

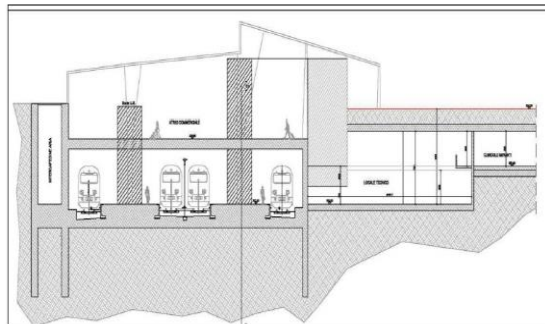


ITINERA spa
part of GAVIO GROUP

DESIGN & BUILD NEW RAILWAY STATION AT TERMINAL 2 Milan Malpensa Airport (*under construction*)



Sezione longitudinale



Sezione trasversale



Technical features:

- Underground Passenger Railway Station
- Size 500 x 50 m,
- Tot. surface 25,000 sqm
- No. 4 rail traks, no. 2 access rail tracks
- Parking area for 1000 cars on station roof.
- Airport in operation during construction

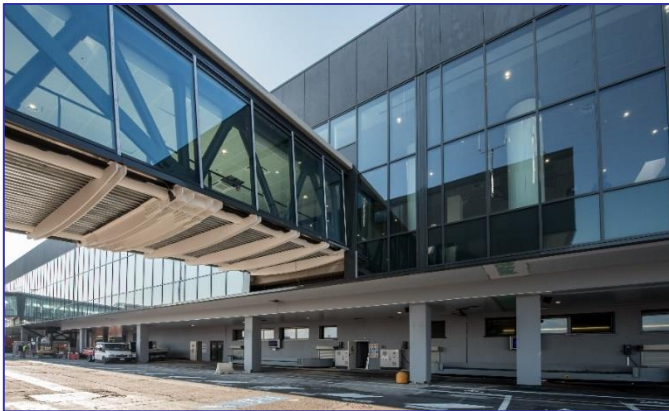
CUT & COVER RAILWAY TUNNEL AT CARGO CITY Milan Malpensa Airport

ITINERA spa
part of GAVIO GROUP



DESIGN & BUILD EXTENSION OF PASSENGER TERMINAL Orio al Serio Bergamo, Caravaggio Airport

ITINERA spa
part of GAVIO GROUP

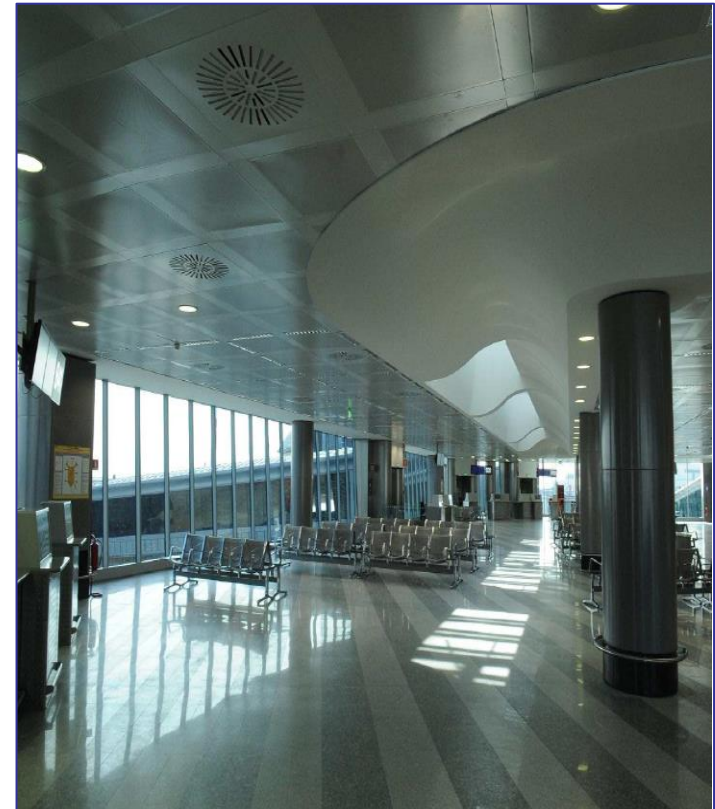


Interiors overview



RESTYLING SATELLITE B TERMINAL 1 - Milan Malpensa Airport**ITINERA spa**
part of GAVIO GROUP**Technical features:**

- Scope: restyling of Arrivals and Departures for EXPO 2015.
- Total area 10,000 sqm
- Demolition of existing interiors
- Finishing works, marble flooring and cover pannels, ceiling, MEP.
- Airport in operation during construction



APRON ENLARGEMENT– Bari Palese Airport

ITINERA spa
part of GAVIO GROUP



Technical features:

Apron 18,500 sqm,

- rigid surface
- thk 400 mm

Taxiways 49,000 sqm, flexible surface



CONSTRUCTION OF RUNWAY/APRON – Venice, Marco Polo Airport

ITINERA spa
part of GAVIO GROUP



Technical features:

- Apron 150,000 sqm,
- Runway 04L/22R lenght 2,780 m
- ICAO class: 4E
- Surface type: rigid
- Concrete slab thk 400 mm



Venezia, Marco Polo Airport

ITINERA spa
part of GAVIO GROUP



Runway and Taxiways full rehabilitation - Orio al Serio Airport

Design – Supervision of Works: Prof. M. Crispino



Pipelines for AVL - Orio al Serio Airport

Design – Supervision of Works: Prof. M. Crispino



New taxiways - Orio al Serio Airport

Design – Supervision of Works: Prof. M. Crispino



New Area cargo – Malpensa Airport

Supervision Consulting: Prof. M. Crispino



Rehabilitation Taxiways T, K, B and THR 22

Design and Supervision of Works : Prof. M. Crispino



Milano Malpensa Airport

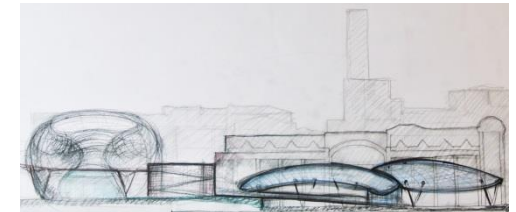
Studio Architetti Caccia Dominioni e Zucca
e Associati



Design of main building and Satellite North - Terminal 1

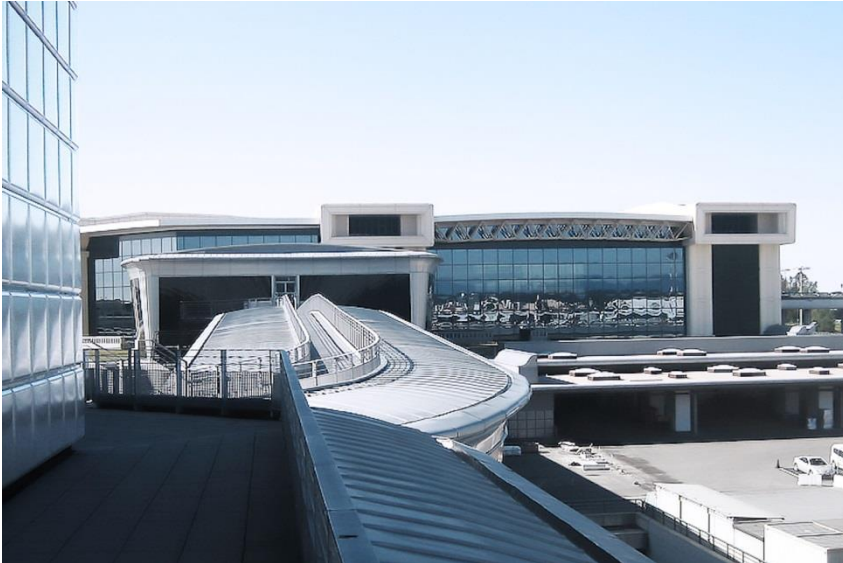
Studio Architetti Caccia Dominioni – Zucca e Associati

<http://www.cidizeta.it>



Milano Malpensa Airport

**Studio Architetti Caccia Dominioni e Zucca
e Associati**



Design of main building and Satellite North - Terminal 1

Studio Architetti Caccia Dominioni – Zucca e Associati

<http://www.cidizeta.it>



Milano Malpensa Airport

**Studio Architetti Caccia Dominioni e Zucca
e Associati**



Design of main building and Satellite North - Terminal 1

Studio Architetti Caccia Dominioni – Zucca e Associati

<http://www.cidizeta.it>

Milano Malpensa Airport

Studio Architetti Caccia Dominioni e Zucca
e Associati



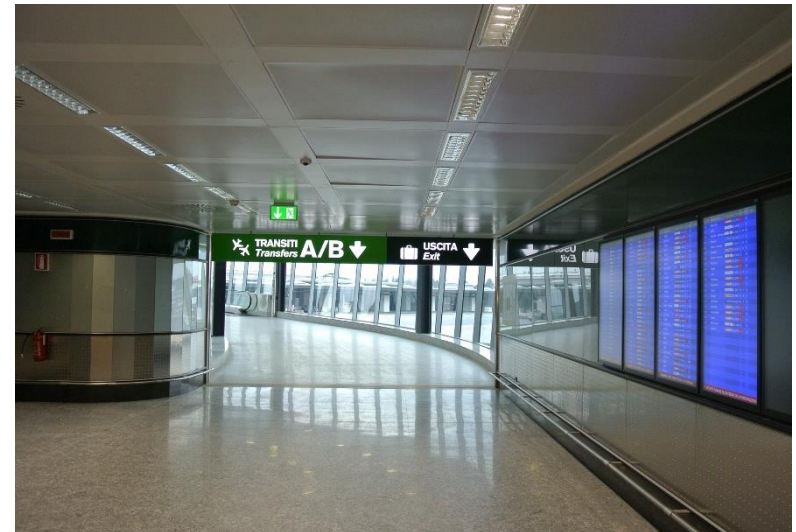
Design of main building and Satellite North - Terminal 1

Studio Architetti Caccia Dominioni – Zucca e Associati

<http://www.cidizeta.it>

Milano Malpensa Airport

Studio Architetti Caccia Dominioni e Zucca
e Associati



Design of main building and Satellite North - Terminal 1

Studio Architetti Caccia Dominioni – Zucca e Associati

<http://www.cidizeta.it>

Milano Malpensa Airport

**Studio Architetti Caccia Dominioni e Zucca
e Associati**



Design of main building and Satellite North - Terminal 1

Studio Architetti Caccia Dominioni – Zucca e Associati

<http://www.cidizeta.it>

Milano Malpensa Airport

**Studio Architetti Caccia Dominioni e Zucca
e Associati**



Design of main building and Satellite North - Terminal 1

Studio Architetti Caccia Dominioni – Zucca e Associati

<http://www.cidizeta.it>

Milano Malpensa Airport

Studio Architetti Caccia Dominioni e Zucca
e Associati



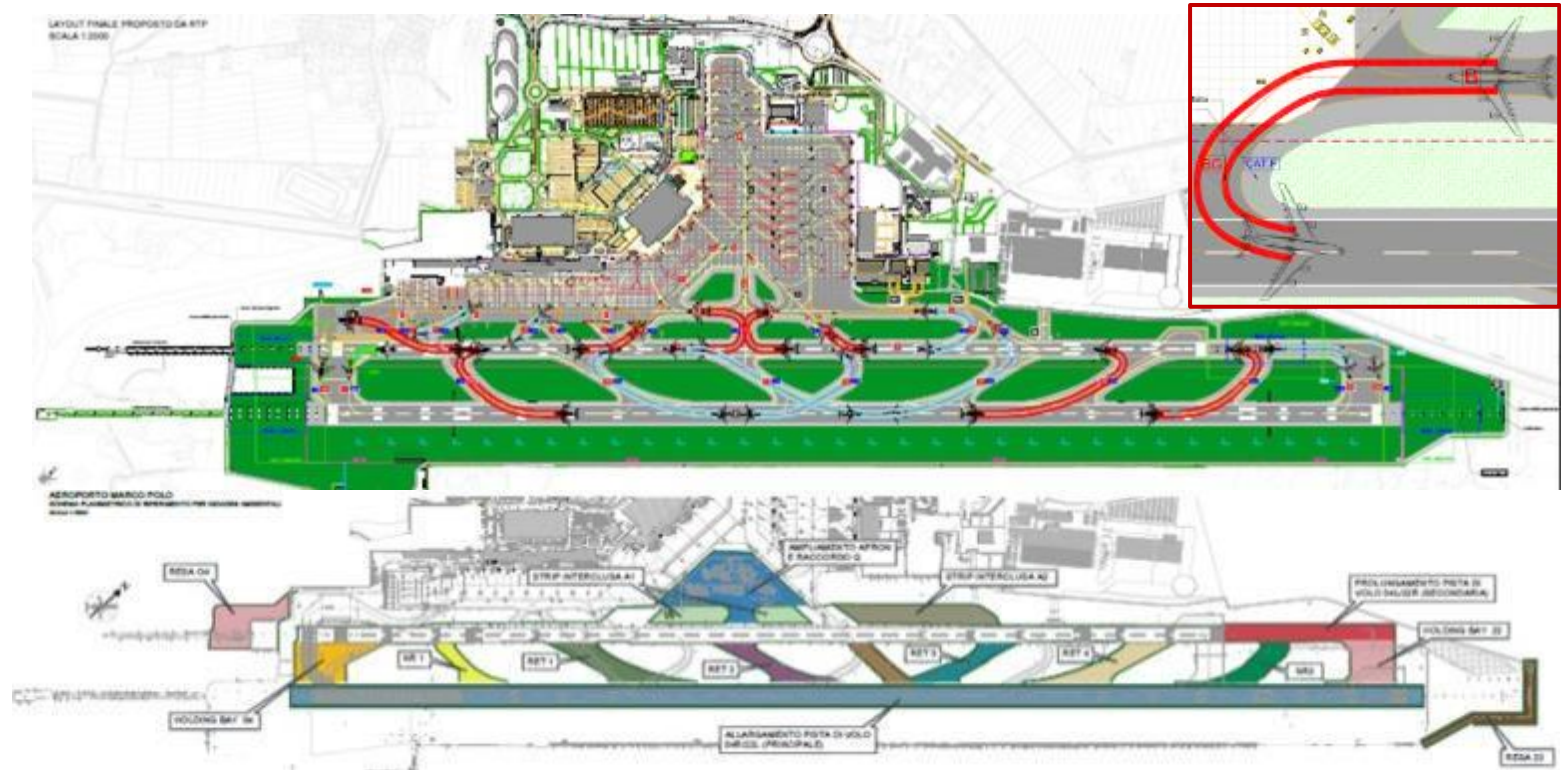
Design of main building and Satellite North - Terminal 1

Studio Architetti Caccia Dominioni – Zucca e Associati

<http://www.cidizeta.it>

International Venezia, Marco Polo Airport

MCI Infrastructures Engineering s.r.l.



Final and detailed design (in JV) about airport assets (runway and taxiways)

MCI Valuable Infrastructures Engineering S.r.l.

Costs of works > 88'000'000 US\$

International Orio al Serio Airport (Bergamo)

MCI Infrastructures Engineering s.r.l.



Preliminary, Detailed and Final design about functional and structural upgrading of airside assets
[Runway and all taxiways](#)
MCI Valuable Infrastructures Engineering S.r.l.

Costs of works > 41'000'000 US\$

International Orio al Serio Airport (Bergamo)

MCI Infrastructures Engineering s.r.l.



Works Supervision (in JV) about functional and structural upgrading of airside assets (runways and all taxiways)
MCI Valuable Infrastructures Engineering S.r.l.

Costs of works > 47'000'000 US\$

Milan Malpensa International Airport

MCI Infrastructures Engineering s.r.l.



Detailed Design and Technical Support to Works Supervision about rehabilitation of 17L/35R Runway

MCI Valuable Infrastructures Engineering S.r.l.

Costs of works > 12'000'000 US\$

Milan Malpensa International Airport

MCI Infrastructures Engineering s.r.l.



Technical Support to Works Supervision about construction of new taxiway Hotel

MCI Valuable Infrastructures Engineering S.r.l.

Costs of works > 13'000'000 US\$

AICG Airport International Construction Group

Rome (ITA)

Via Vittoria Colonna, 32

Phone +39 06 68 731 65

Fax +39 06 45 555 778

E-Mail: insecomc.eng@imceng.com